

Monday, January 11, 2010

MEMORANDUM

To: Sawmill Cove Industrial Park Board of Directors (SCIP Board)

From: Garry White, Director

Subject: Civil Defense Siren

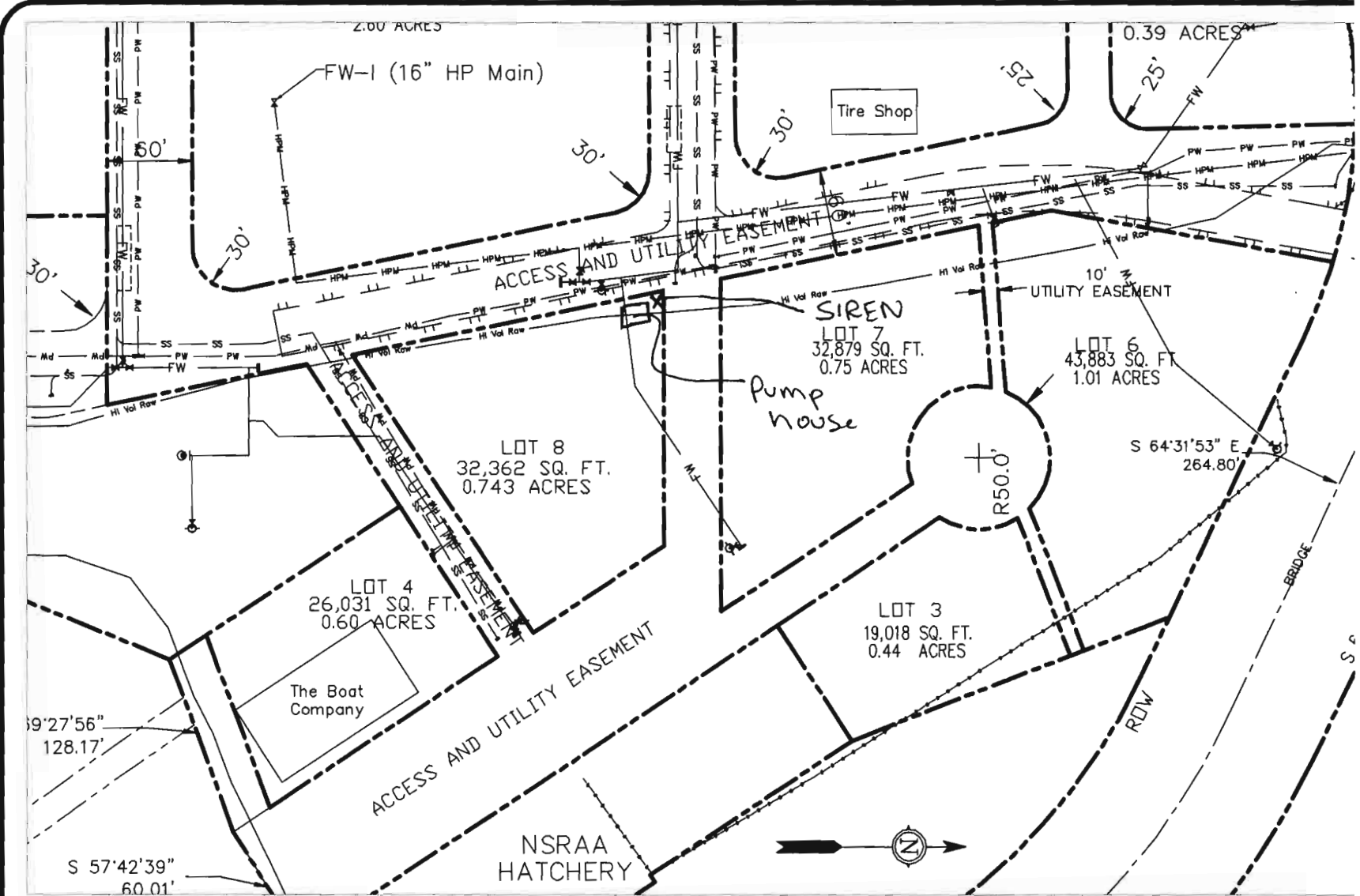
Background

The CBS is required to locate a civil defense siren at the SCIP. The siren will be attached to a pole 40' high and will need to be sunk into the ground 10'. The siren also requires electricity. The siren needs to be at least 200' from any structure that has a second story that habits people.

Attached is the proposed location of the siren.

Action

Approval of the location of the siren



- HPM — Old High Pressure Water Main
- FM — Old Fire Suppression Main (non-potable)
- PW — New Potable Standard Pressure Potable Water Main
- HRW — New High Volume Raw (non-potable) Water Main
- SS — New Pressurized Sanitary Sewer Line
- V — Water Valve
- H — Fire Hydrant on Fire Suppression System
- H — Fire Hydrant on New Potable System
- S — Water service valve
- S — Sewer service valve

Utility Layout
Lots 3-4 & 6-8 Block 4
Sawmill Cove Industrial Park

DRAWN:	TAD	SCALE:	1" = 100'
CHECKED:	N/A	DATE:	Aug 2008
DRAWING NAMMIB Valve Locations 2003 w Subv ILL, tex			
SHEET NO.	1 / 5		